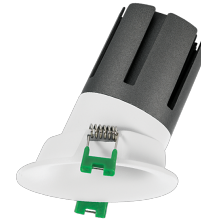


### Widot AS

**RTL23548PD** - Rounded Asymmetric - 15 W - 1450 lumen / 2700 K / CRI >90

#### DESCRIPTION

Widot is therefore particularly suitable for all those lighting systems where the fixtures must be installed in a white false ceiling without the plaster finishing; it is a recessed product characterized by its rounded housing that, completely white and curved inwards, ensures continuity with false ceiling without signs or differences in finishes. Quick and easy to install thanks to the fast coupling system and to the "fast plug" connector of the driver, Widot is the right solution for systems that need quick installation without renouncing the aesthetic and formal cleaning of visible parts. CoB leds are selected among prime brands and the four available optics enable the realization of different accent lighting effects for all the main lighting requirements. The asymmetric version completes the range, allows the lighting of the walls with "accent washing" effects. The asymmetrical version completes the range allowing the lighting of the walls with "accent washing" effects.

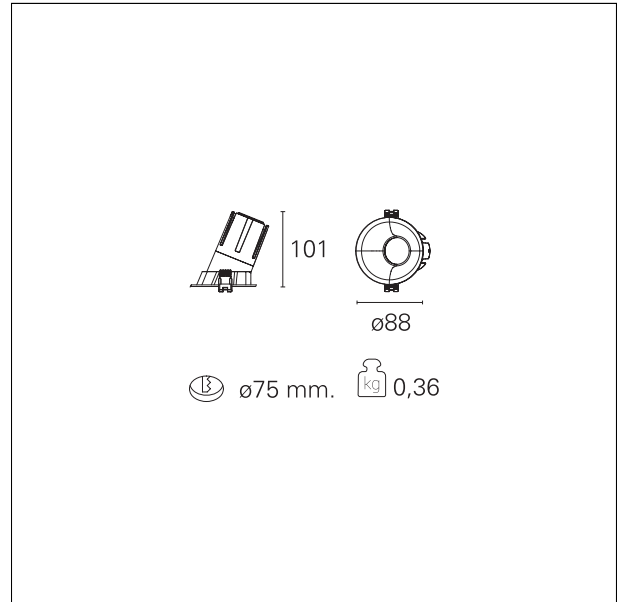


Switch

Pan Digital

#### PRODUCTS CHARACTERISTICS

installation type	<b>trimmed recessed</b>
Color	<b>White</b>
Power	<b>15 W</b>
Lumen output - Full emission	<b>1228 lm</b>
Efficacy	<b>82 lm/W</b>
Diameter	<b>Ø 88 mm.</b>
Dimensions	<b>h. 101 mm.</b>



#### ELECTRICAL CHARACTERISTICS

feeding	<b>220÷240 V</b>
driver	<b>Pan Digital</b>
Insulation class	<b>Class II</b>

### Widot AS

**RTL23548PD** - Rounded Asymmetric - 15 W - 1450 lumen / 2700 K / CRI >90

#### MECHANICAL CHARACTERISTICS

optical compartment IP rate	<b>IP40</b>
recessed compartment IP rate	<b>IP20</b>

#### HOLE RECESS DIMENSIONS

hole recess diameter	<b>Ø 75 mm.</b>
----------------------	-----------------

#### LED SOURCE DETAILS

Light temperature	<b>2700 K</b>
CRI	<b>CRI &gt;90</b>
SDCM	<b>&lt; 3</b>

#### DRIVER CHARACTERISTICS

driver	<b>Pan Digital</b>
--------	--------------------

#### LIGHTING DETAILS

emission	<b>asymmetric</b>
optic	<b>55°</b>
Beam angle - direct	<b>Asymmetric</b>
UGR	<b>≤ 19</b>

#### PHOTOMETRIC

### Widot AS

RTL23548PD - Rounded Asymmetric - 15 W - 1450 lumen / 2700 K / CRI >90

