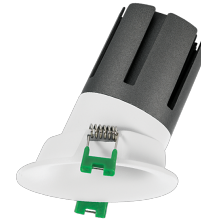


Widot AS

RTL23542PD - Rounded Asymmetric - 10 W - 920 lumen / 2700 K / CRI >90

DESCRIPTION

Widot is therefore particularly suitable for all those lighting systems where the fixtures must be installed in a white false ceiling without the plaster finishing; it is a recessed product characterized by its rounded housing that, completely white and curved inwards, ensures continuity with false ceiling without signs or differences in finishes. Quick and easy to install thanks to the fast coupling system and to the "fast plug" connector of the driver, Widot is the right solution for systems that need quick installation without renouncing the aesthetic and formal cleaning of visible parts. CoB leds are selected among prime brands and the four available optics enable the realization of different accent lighting effects for all the main lighting requirements. The asymmetric version completes the range, allows the lighting of the walls with "accent washing" effects. The asymmetrical version completes the range allowing the lighting of the walls with "accent washing" effects.

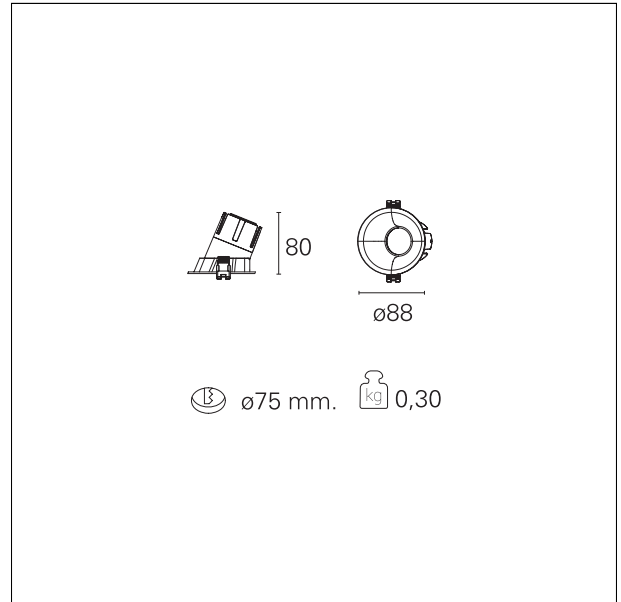


Switch

Pan Digital

PRODUCTS CHARACTERISTICS

installation type	trimmed recessed
Color	White
Power	10 W
Lumen output - Full emission	784 lm
Efficacy	78 lm/W
Diameter	Ø 88 mm.
Dimensions	h. 80 mm.



ELECTRICAL CHARACTERISTICS

feeding	220÷240 V
driver	Pan Digital
Insulation class	Class II

Widot AS

RTL23542PD - Rounded Asymmetric - 10 W - 920 lumen / 2700 K / CRI >90

MECHANICAL CHARACTERISTICS

optical compartment IP rate	IP40
recessed compartment IP rate	IP20

HOLE RECESS DIMENSIONS

hole recess diameter	Ø 75 mm.
----------------------	-----------------

LED SOURCE DETAILS

Light temperature	2700 K
CRI	CRI >90
SDCM	< 3

DRIVER CHARACTERISTICS

driver	Pan Digital
--------	--------------------

LIGHTING DETAILS

emission	asymmetric
optic	24°
Beam angle - direct	Asymmetric
UGR	≤ 17

PHOTOMETRIC

Widot AS

RTL23542PD - Rounded Asymmetric - 10 W - 920 lumen / 2700 K / CRI >90

