

### Grace

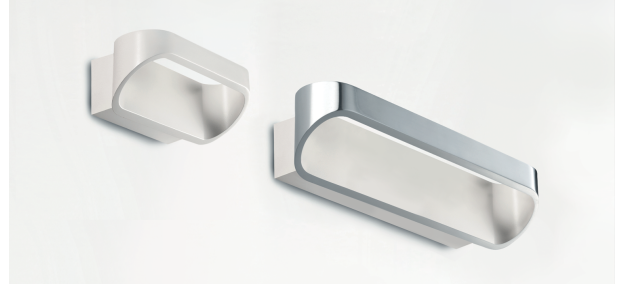
**PAR265** - 5 W / 3000 K / CRI > 80

#### DESCRIPTION

Grace, realized in aluminum, is particularly suitable for diffused lighting in indoor ambients. It is available in two versions of 18 cm and 30 cm. wide, equipped respectively with 5 W power LED for indirect emission and 2x 5W for double direct / indirect emission. Both versions are available in white or two-tone, white for the internal visible part and aluminum for the external part. It comes complete with integrated driver.

Switch

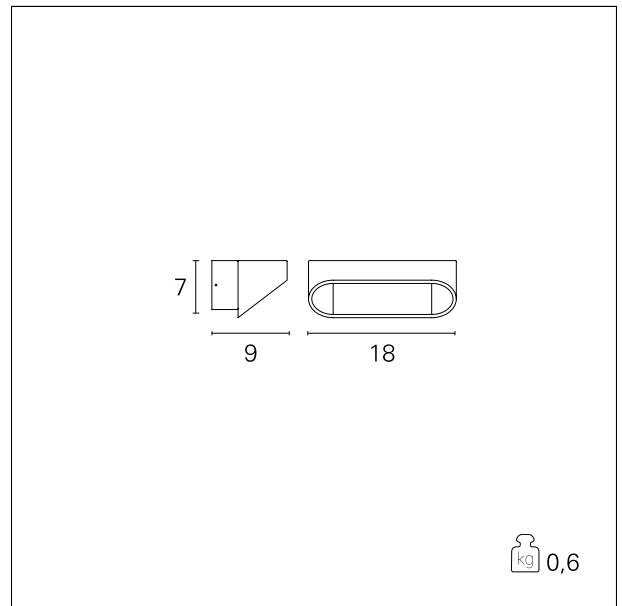
On+Off



#### PRODUCTS CHARACTERISTICS

installation type  
material  
Color  
Power  
Lumen output - Full emission  
net weight

**Wall Mounting**  
**Aluminum**  
**White**  
**5 W**  
**310 lm**  
**0,60 kg.**



#### ELECTRICAL CHARACTERISTICS

feeding  
driver  
Insulation class

**220÷240 V**  
**On+Off**  
**Class I**

#### MECHANICAL CHARACTERISTICS

product IP rate

**IP20**

### Grace

**PAR265** - 5 W / 3000 K / CRI > 80

---

#### LED SOURCE DETAILS

---

led source type	<b>Power Led</b>
Light temperature	<b>3000 K</b>
CRI	<b>CRI &gt; 80</b>

#### DRIVER CHARACTERISTICS

---

driver	<b>On+Off</b>
--------	---------------

#### LIGHTING DETAILS

---

emission	<b>Direct / Indirect</b>
----------	--------------------------