

### Grace

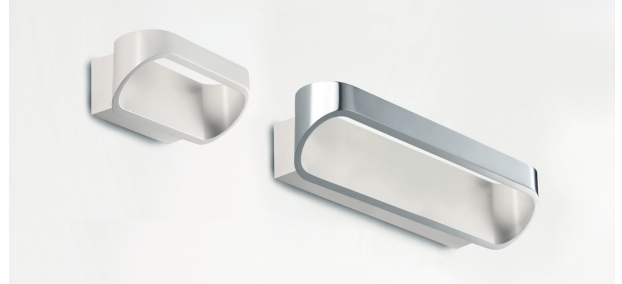
PAR264 - 5 W / 3000 K / CRI > 80

#### DESCRIPTION

Grace, realized in aluminum, is particularly suitable for diffused lighting in indoor ambients. It is available in two versions of 18 cm and 30 cm. wide, equipped respectively with 5 W power LED for indirect emission and 2x 5W for double direct / indirect emission. Both versions are available in white or two-tone, white for the internal visible part and aluminum for the external part. It comes complete with integrated driver.

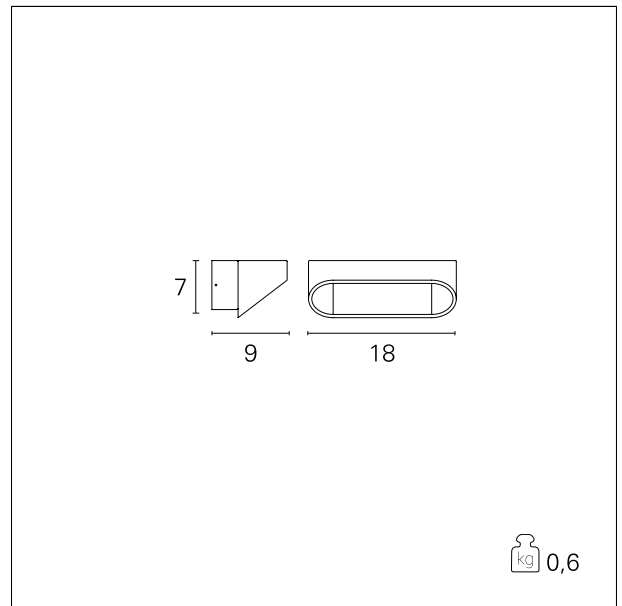
Switch

On+Off



#### PRODUCTS CHARACTERISTICS

installation type	<b>Wall Mounting</b>
material	<b>Aluminum</b>
Color	<b>Aluminum / white</b>
Power	<b>5 W</b>
Lumen output - Full emission	<b>310 lm</b>
net weight	<b>0,60 kg.</b>



#### ELECTRICAL CHARACTERISTICS

feeding	<b>220÷240 V</b>
driver	<b>On+Off</b>
Insulation class	<b>Class I</b>

#### MECHANICAL CHARACTERISTICS

product IP rate	<b>IP20</b>
-----------------	-------------

### Grace

**PAR264** - 5 W / 3000 K / CRI > 80

---

#### LED SOURCE DETAILS

---

led source type	<b>Power Led</b>
Light temperature	<b>3000 K</b>
CRI	<b>CRI &gt; 80</b>

#### DRIVER CHARACTERISTICS

---

driver	<b>On+Off</b>
--------	---------------

#### LIGHTING DETAILS

---

emission	<b>Direct / Indirect</b>
----------	--------------------------