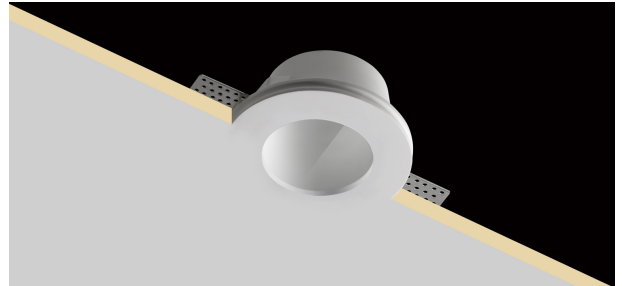


Plaster 9

INC10020 - max. 35 W

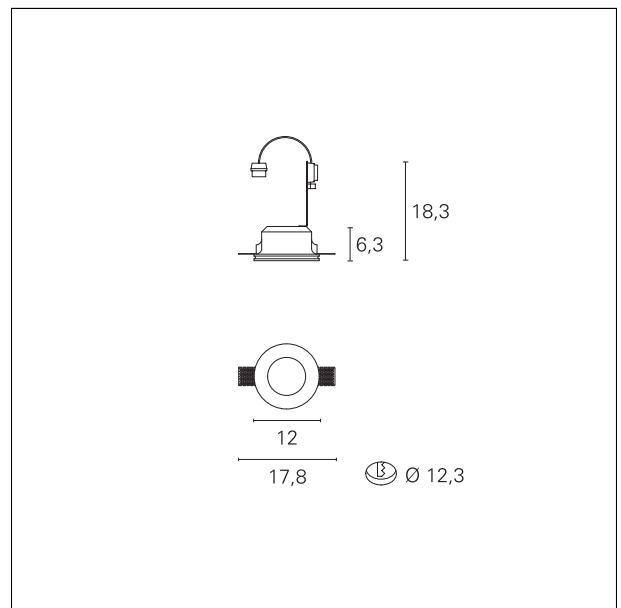
DESCRIPTION

Plaster recessed downlight with GU10 lampholder set back. Diffusing glass screen for direct glare control. Product is complete with GU10 lamp holder for 220 / 230V LED bulb. Ideal for functional and easy installations. Bulb is not included with the product.



PRODUCTS CHARACTERISTICS

| | |
|-------------------|--------------------------|
| installation type | trimless recessed |
| material | Chalk |
| Finish | Smoothed |
| Color | White |
| Power | max. 35 W |
| Dimensions | ø 120 mm. |
| net weight | 0,60 kg. |



ELECTRICAL CHARACTERISTICS

| | |
|------------------|------------------|
| feeding | 220÷240 V |
| driver | On:Off |
| Insulation class | Class II |

MECHANICAL CHARACTERISTICS

| | |
|-----------------|-------------|
| product IP rate | IP20 |
|-----------------|-------------|

Plaster 9

INC10020 - max. 35 W

HOLE RECESS DIMENSIONS

hole recess diameter **ø 123 mm.**

LED SOURCE DETAILS

led source type **LED / HAGS**
Light source connection **GU10**

LIGHTING DETAILS

emission **rotationally symmetrical**