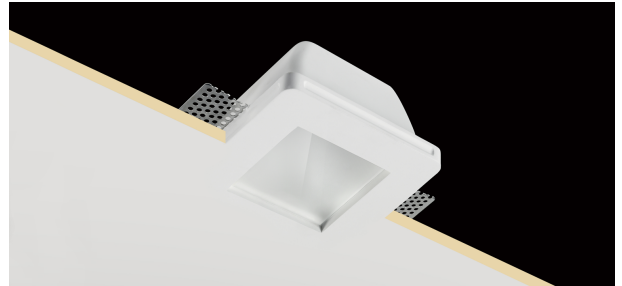


Plaster 1

INC10010 - max. 35 W

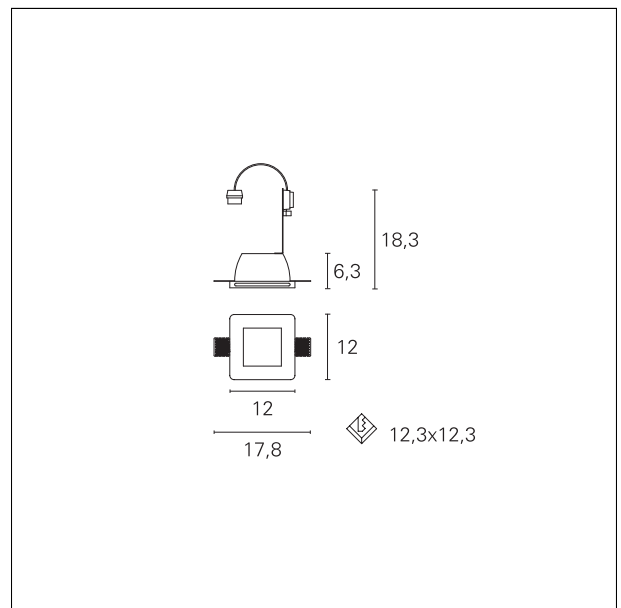
DESCRIPTION

Plaster recessed downlight with GU10 lampholder set back. Diffusing glass screen for direct glare control. Product is complete with GU10 lamp holder for 220 / 230V LED bulb. Ideal for functional and easy installations. Bulb is not included with the product.



PRODUCTS CHARACTERISTICS

installation type	trimless recessed
material	Chalk
Finish	Smoothed
Color	White
Power	max. 35 W
Dimensions	120 x 120 mm.
net weight	0,80 kg.



ELECTRICAL CHARACTERISTICS

feeding	220÷240 V
driver	On÷Off
Insulation class	Class II

MECHANICAL CHARACTERISTICS

product IP rate	IP20
-----------------	-------------

Plaster 1

INC10010 - max. 35 W

HOLE RECESS DIMENSIONS

a x b hole recess **123 x 123 mm.**

LED SOURCE DETAILS

led source type **LED / HAGS**
Light source connection **GU10**

LIGHTING DETAILS

emission **rotationally symmetrical**