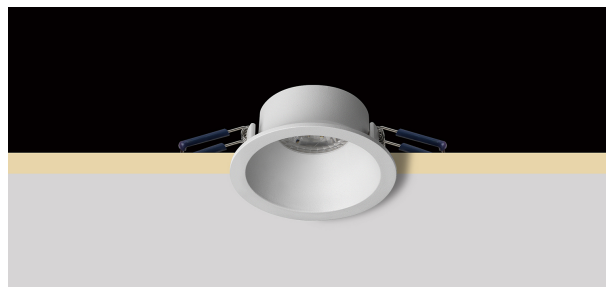


### GU10 1

**INC00080** - Fixed - Rounded - max. 50 W

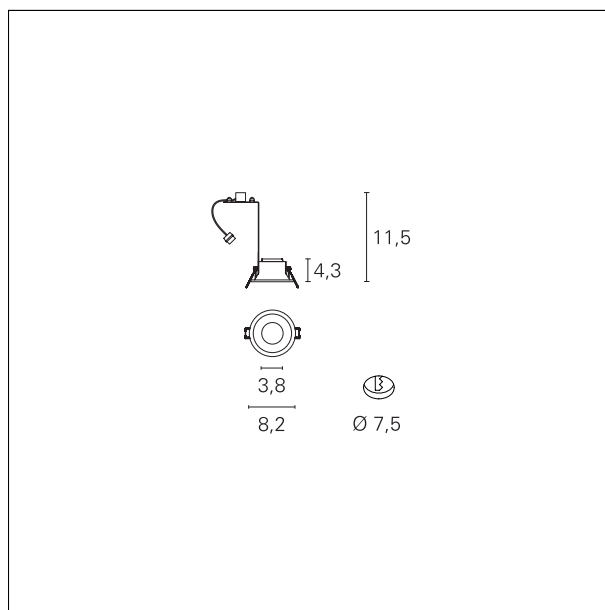
#### DESCRIPTION

Turn is a recessed luminaire made of turned metal and available in the fixed or adjustable optic version. It allows to create spotlight effects and is complete with lamp holder for GU10 lamp not included.



#### PRODUCTS CHARACTERISTICS

installation type	<b>Recessed Spotlights</b>
material	<b>Aluminum</b>
Color	<b>White</b>
Power	<b>max. 50 W</b>
net weight	<b>0,20 kg.</b>



#### ELECTRICAL CHARACTERISTICS

feeding	<b>220÷240 V</b>
driver	<b>On:Off</b>
Insulation class	<b>Class II</b>

#### MECHANICAL CHARACTERISTICS

product IP rate	<b>IP20</b>
-----------------	-------------

### GU10 1

**INC00080** - Fixed - Rounded - max. 50 W

---

#### HOLE RECESS DIMENSIONS

---

hole recess diameter **ø 75 mm.**

#### LED SOURCE DETAILS

---

led source type **LED / HAGS**  
Light source connection **GU10**

#### LIGHTING DETAILS

---

emission **rotationally symmetrical**